

## Most Popular Pages

[The Tattooed Ladies Of Hollywood](#)

- [2010 Celebrity Deaths](#)
- [Celebrity DUI's](#)
- [Jewish Celebrities](#)
- [Openly Gay Celebrities](#)

[E-mail](#) [Print](#) [Share +](#) [Comments](#)

Apr 14, 2010 6:29 pm US/Eastern

## Trade Center Steel Makes Its Way Home To Pa.

COATESVILLE, Pa. (AP) — Massive steel remnants of the fallen World Trade Center towers returned Wednesday to the Pennsylvania city where they were made more than four decades ago, in a solemn homecoming that was never meant to be.

A mile-long procession of 28 flatbed trucks arrived in Coatesville carrying 500 tons of structural supports, referred to as "steel trees" because of their upward branching shape.

Forged in 1969 by Lukens Steel Co., the supports framed the perimeter of the twin towers' first nine floors and massive lobbies before the Sept. 11 terrorist attacks reduced both skyscrapers to rubble.

"It's our goal to honor those who lost their lives on 9/11, as well as the steelworkers who created the steel for these monumental buildings during the 1960s," said Scott Huston, a descendent of the Lukens family and president of the Graystone Society, a local historic preservation group.

Two of the trucks were involved in a minor accident on the way from New York. Transit officials said one truck apparently rear-ended another, but no one was hurt.

Coatesville planned a procession through the city as the 10 "steel trees," at 50 tons apiece, arrived, as well as a ceremony hosted by local civic leaders who want to open a proposed National Iron and Steel Heritage Museum.

The World Trade Center's twisted steel supports, among the few remaining pieces of the 110-story skyscrapers still standing in the aftermath of the 2001 attacks, became an iconic image of defiance and strength for a mourning nation.

"We feel that it is only fitting that these trees become the keystone of The National Iron and Steel Heritage Museum, especially as the 10th anniversary of 9/11 draws near," Huston said.

Though the event was to be somber in tone, the arrival of the World Trade Center artifacts is also seen as an element of the rebirth of Coatesville, a city of 11,000 about 35 miles west of Philadelphia.

The city grew alongside the steel industry and it has also declined with it. In 2008 and 2009, Coatesville made national headlines amid a plague of dozens of arsons that caused millions in damage and left one person dead.

The Graystone Society is forming a committee to oversee the design for a memorial that will incorporate the structures. The group is named for the Graystone Mansion, part of The Lukens National Historic District that also includes the 35,000-square foot former industrial building that will be museum's home.

An opening date for the museum has not been announced.

The Port Authority of New York and New Jersey donated the steel

supports. Fundraising efforts are under way to recoup the \$180,000 in shipping costs paid by the Graystone Society.

-----

National Iron and Steel Heritage Museum <http://www.steelmuseum.org>



1 of 1

[Click to enlarge](#)

CBS

### Related Slideshows



[For Chuckles: Politicians Goofing Off](#)



[Famous People Piggig Out](#)



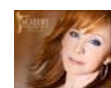
[Winning Moments At The 2010 Augusta Masters Golf Tournament](#)



[Taylor Swift Through The Years](#)



[Civil War Weekend At Historic Fort Mifflin](#)



[ACM Awards Look Back, Look Ahead](#)



[2010 Celebrity Deaths](#)



[Center City Macy's Flower Show](#)



(© 2010 The Associated Press. All Rights Reserved. This material may not be published, broadcast, rewritten, or redistributed.)

BS3.com Editor's Picks

- [What's Brewing ...](#)
- [Everything Phillies](#)
- [Latest Forecast](#)
- [Famous People Piggig Out](#)

**Add Comment**

To post comments, you must log in by clicking [here](#). Need a log in? [Register here](#)

Your Name

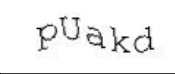
Your E-Mail  \* Will not be displayed with comment

Suggest Link  Link \* e.g. (<http://www.mywebsite.com>)

Your Comment

1024 characters remaining for comment

Type the characters in this picture:\*



[Click here to refresh with new letters](#)

[Show Comments \(0\)](#)